



CannaBusiness Laboratories, LLC

2554 Palumbo Dr. Lexington, KY 40509

Certificate of Analysis

Sample ID: **210112018**

Order Number: **CB210112012**

Sample Name: **2400mg/mL CBD in OHSO**

Collected Date:

Received Date: **1/12/2021**

COA Released: **3/15/2021**

Comments:

External Sample ID:

Batch Number: **2101211.80**

Product Type: **Concentrate**

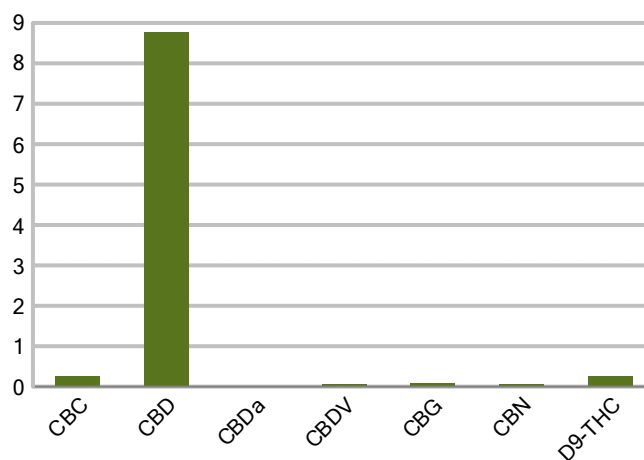
Sample Type: **Concentrate**

CANNABINOID PROFILE

Analyte	LOQ (%)	% weight	mg/ml
CBC	0.01	0.263	2.448
CBD	0.01	8.770	81.56
CBDa	0.01	0.017	0.161
CBDV	0.01	0.069	0.640
CBG	0.01	0.097	0.902
CBGa	0.01	ND	ND
CBN	0.01	0.054	0.503
d8-THC	0.01	ND	ND
d9-THC	0.01	0.250	2.323
THCa	0.01	ND	ND
Total Cannabinoids		9.520	88.53
Total Potential THC		0.250	2.323
Total Potential CBD		8.785	81.70
Total Potential CBG		0.097	0.902



Cannabinoids (% weight)



Ratio of Total Potential CBD to Total Potential THC 35.14 : 1

Ratio of Total Potential CBG to Total Potential THC 0.39 : 1

**Total Cannabinoids refers to the sum of all cannabinoids detected.*

**Total Potential CBD = (0.877 x CBDa) + CBD. *Total Potential THC = (0.877 x THCa) + THC. *Total Potential CBG = (0.877 x CBGa) + CBG.*

**Total Potential THC/CBD are calculated to take into account the loss of an acid group during decarboxylation.*



Accreditation #109588

Authorized Signature



Rachael Craycraft

DATE

This product has been tested by CannaBusiness Laboratories using validated testing methodologies and a quality system. Values reported relate only to the product tested. CannaBusiness Laboratories makes no claims as to the efficacy, safety, or other risks associated with any detected or non-detected levels of any compounds reported herein. This Certificate shall be reproduced except in full, without the written permission of CannaBusiness Laboratories. Uncertainty information is available on request. Photo is of sample received by the lab and may vary from final packaging. The results apply to the sample as received. ISO/IEC 17025:2017 Accredited.

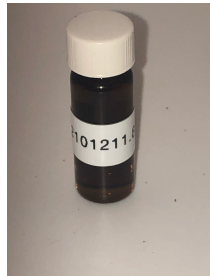


CannaBusiness Laboratories, LLC
2554 Palumbo Dr. Lexington, KY 40509



Sample ID: 210112018
Sample Name: 2400mg/mL CBD in OHSO
Sample Type: Concentrate

Certificate of Analysis



Overall Batch Results	
Pesticide N/A	Moisture Content N/A
Potency PASS	Water Activity N/A
Mycotoxins N/A	Heavy Metals N/A
Microbial Screen N/A	Residual Solvents N/A
Terpenoids N/A	

Sample Name: 2400mg/mL CBD in OHSO

Sample ID: 210112018

Product Type: Concentrate

Sample Type: Concentrate

Collected Date:

Received Date: 01/12/2021

Batch Number: 2101211.80

Batch Size:

Sample Size:

COA released: 03/15/2021 9:06 AM

Potency			
Date Tested: 01/13/2021		Method:	
Instrument:			
0.250 % Total THC	8.785 % Total CBD	9.520 % Total Cannabinoids	NT Total Cannabinoids

Analyte	Result	Units	LOQ	Result	Units
CBC (Cannabichromene)	0.263	%	0.010	2.448	mg/mL
CBD (Cannabidiol)	8.770	%	0.010	81.56	mg/mL
CBDa (Cannabidiolic Acid)	0.017	%	0.010	0.161	mg/mL
CBDV (Cannabidivarin)	0.069	%	0.010	0.640	mg/mL
CBG (Cannabigerol)	0.097	%	0.010	0.902	mg/mL
CBGa (Cannabigerolic Acid)	ND	%	0.010	ND	mg/mL
CBN (Cannabinol)	0.054	%	0.010	0.503	mg/mL
D8-THC (D8-Tetrahydrocannabinol)	ND	%	0.010	ND	mg/mL
D9-THC (D9-Tetrahydrocannabinol)	0.250	%	0.010	2.323	mg/mL
THCa (Tetrahydrocannabinolic Acid)	ND	%	0.010	ND	mg/mL



Authorized Signature



Rachael Craycraft

03/15/2021 9:06 AM

Date Time

NT = Not tested, ND = Not detected; LOQ = Limit of Quantitation; <LOQ = Detected; >ULOL = Above upper limit of linearity; CFU/g = Colony forming units per 1 gram; TNTC = Too numerous to count

CannaBusiness Laboratories
License # P-0059: (859)-514- 6999 <https://www.cannabusinesslabs.us>

This product has been tested by CannaBusiness Laboratories using validated testing methodologies and a quality system. Values reported relate only to the product tested. CannaBusiness Laboratories makes no claims as to the efficacy, safety, or other risks associated with any detected or non-detected levels of any compounds reported herein. This Certificate shall not be reproduced except in full, without the written permission of CannaBusiness Laboratories. Uncertainty information is available on request. Photo is of sample received by the lab and may vary from final packaging. The results apply to the sample as received. ISO/IEC 17025:2017 Accredited.