



CannaBusiness Laboratories, LLC

2554 Palumbo Dr. Lexington, KY 40509

Certificate of Analysis

Sample ID: **210518013**

Order Number: **CB210518005**

Sample Name: **80mg/mL CBD in OHSO**

Collected Date:

Received Date: **5/18/2021**

COA Released: **5/20/2021**

Comments:

External Sample ID:

Batch Number: **2113811.80**

Product Type: **Concentrate**

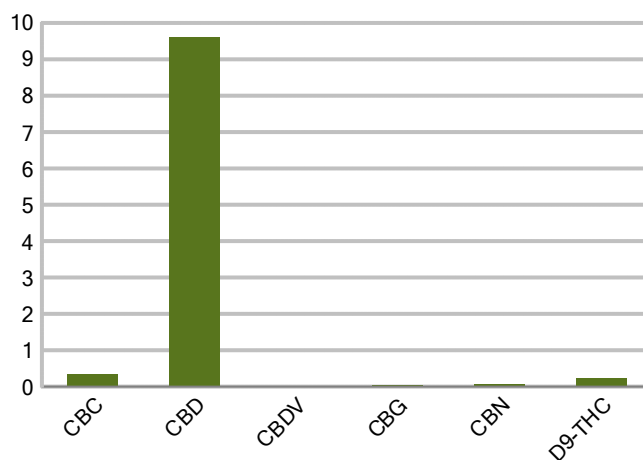
Sample Type: **Concentrate**

CANNABINOID PROFILE

Analyte	LOQ (%)	% weight	mg/ml
CBC	0.01	0.343	3.194
CBD	0.01	9.601	89.29
CBDa	0.01	ND	ND
CBDV	0.01	0.025	0.228
CBG	0.01	0.033	0.307
CBGa	0.01	ND	ND
CBN	0.01	0.059	0.550
d8-THC	0.01	ND	ND
d9-THC	0.01	0.235	2.189
THCa	0.01	ND	ND
Total Cannabinoids		10.30	95.76
Total Potential THC		0.235	2.354
Total Potential CBD		9.601	89.29
Total Potential CBG		0.033	0.307



Cannabinoids (% weight)



Ratio of Total Potential CBD to Total Potential THC 40.86 : 1

Ratio of Total Potential CBG to Total Potential THC 0.14 : 1

**Total Cannabinoids refers to the sum of all cannabinoids detected.*

**Total Potential CBD = (0.877 x CBDa) + CBD. *Total Potential THC = (0.877 x THCa) + THC. *Total Potential CBG = (0.877 x CBGa) + CBG.*

**Total Potential THC/CBD are calculated to take into account the loss of an acid group during decarboxylation.*



Accreditation #109588

Authorized Signature

Jamie Hobgood
Laboratory Manager

Jamie Hobgood

05/20/2021 3:26 PM

DATE

This product has been tested by CannaBusiness Laboratories using validated testing methodologies and a quality system. Values reported relate only to the product tested. CannaBusiness Laboratories makes no claims as to the efficacy, safety, or other risks associated with any detected or non-detected levels of any compounds reported herein. This Certificate shall be reproduced except in full, without the written permission of CannaBusiness Laboratories. Uncertainty information is available on request. Photo is of sample received by the lab as it varies from final packaging. The results apply to the sample as received. ISO/IEC 17025:2017 Accredited.

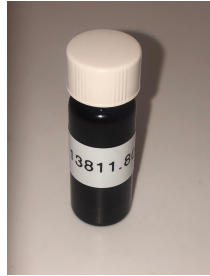


CannaBusiness Laboratories, LLC
2554 Palumbo Dr. Lexington, KY 40509



Sample ID: 210518013
Sample Name: 80mg/mL CBD in OHSO
Sample Type: Concentrate

Certificate of Analysis



Overall Batch Results	
Pesticide	Moisture Content
Potency	Water Activity
Mycotoxins	Heavy Metals
Microbial Screen	Residual Solvents
Terpenoids	

Sample Name: 80mg/mL CBD in OHSO

Sample ID: 210518013

Product Type: Concentrate

Sample Type: Concentrate

Collected Date:

Received Date: 05/18/2021

Batch Number: 2113811.80

Batch Size:

Sample Size:

COA released: 05/20/2021 3:26 PM

Potency (mg/mL)			
Date Tested: 05/20/2021		Method: CB-SOP-028	
Instrument:			
0.235 %	9.601 %	10.30 %	95.76 mg/mL
Total THC	Total CBD	Total Cannabinoids	Total Cannabinoids

Analyte	Result	Units	LOQ	Result	Units
CBC (Cannabichromene)	0.343	%	0.010	3.194	mg/mL
CBD (Cannabidiol)	9.601	%	0.010	89.29	mg/mL
CBDa (Cannabidiolic Acid)	ND	%	0.010	ND	mg/mL
CBDV (Cannabidivarin)	0.025	%	0.010	0.228	mg/mL
CBG (Cannabigerol)	0.033	%	0.010	0.307	mg/mL
CBGa (Cannabigerolic Acid)	ND	%	0.010	ND	mg/mL
CBN (Cannabinol)	0.059	%	0.010	0.550	mg/mL
D8-THC (D8-Tetrahydrocannabinol)	ND	%	0.010	ND	mg/mL
D9-THC (D9-Tetrahydrocannabinol)	0.235	%	0.010	2.189	mg/mL
THCa (Tetrahydrocannabinolic Acid)	ND	%	0.010	ND	mg/mL



Authorized Signature

J. Hobgood
Laboratory Manager

Jamie Hobgood

05/20/2021 3:26 PM

Date Time

NT = Not tested, ND = Not detected; LOQ = Limit of Quantitation; <LOQ = Detected; >ULOL = Above upper limit of linearity; CFU/g = Colony forming units per 1 gram; TNTC = Too numerous to count

CannaBusiness Laboratories
License # P-0059: (859)-514- 6999 <https://www.cannabusinesslabs.us>

This product has been tested by CannaBusiness Laboratories using validated testing methodologies and a quality system. Values reported relate only to the product tested. CannaBusiness Laboratories makes no claims as to the efficacy, safety, or other risks associated with any detected or non-detected levels of any compounds reported herein. This Certificate shall not be reproduced except in full, without the written permission of CannaBusiness Laboratories. Uncertainty information is available on request. Photo is of sample received by the lab and may vary from final packaging. The results apply to the sample as received. ISO/IEC 17025:2017 Accredited.