



Certificate of Analysis

CANNABUSINESS LABORATORIES, LLC



Sample ID **230622016**
 Order Number **CB230622011**
 Sample Name **25mg/g CBD Cream**

External Sample ID

Batch Number **2317316.25**
 Product Type **Topical**
 Sample Type **Topical**

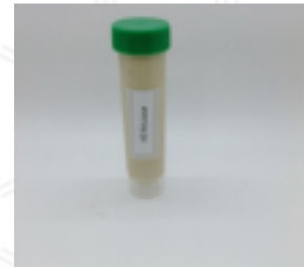
Received Date **6/22/2023**
 COA Released **6/23/2023**

Comments

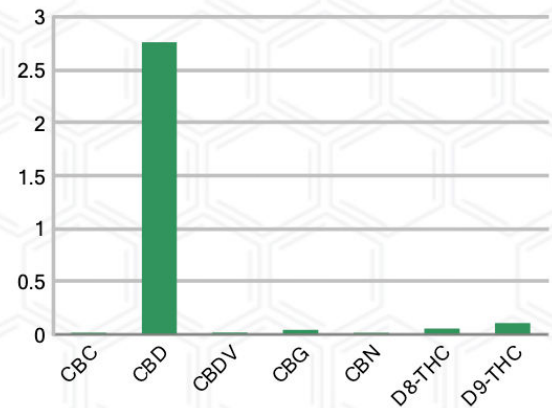
CANNABINOID PROFILE

Analyte	LOQ (%)	% Weight	mg/g
CBC	0.01	0.016	0.161
CBD	0.01	2.761	27.61
CBDa	0.01	ND	ND
CBDV	0.01	0.018	0.180
CBG	0.01	0.043	0.431
CBGa	0.01	ND	ND
CBN	0.01	0.015	0.155
d8-THC	0.01	0.056	0.558
d9-THC	0.01	0.107	1.072
THCa	0.01	ND	ND
Total Cannabinoids		3.017	30.17
Total Potential THC		0.107	1.072
Total Potential CBD		2.761	27.61
Total Potential CBG		0.043	0.431
Ratio of Total Potential CBD to Total Potential THC			25.80 : 1
Ratio of Total Potential CBG to Total Potential THC			0.40 : 1

SAMPLE IMAGE



CANNABINOIDS % Weight



*Total Cannabinoids refers to the sum of all cannabinoids detected.

*Total Potential CBD = (0.877 x CBDa) + CBD. *Total Potential THC = (0.877 x THCa) + THC. *Total Potential CBG = (0.877 x CBGa) + CBG.

*Total Potential THC/CBD are calculated to take into account the loss of an acid group during decarboxylation.



J. Hobgood
 Laboratory Manager
 SIGNATURE

Jamie Hobgood
 LABORATORY MANAGER

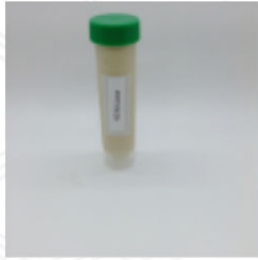
06/23/2023 4:57 PM
 DATE

This product has been tested by CannaBusiness Laboratories using validated testing methodologies and a quality system. Values reported relate only to the product tested. CannaBusiness Laboratories makes no claims as to the efficacy, safety, or other risks associated with any detected or non-detected levels of any compounds reported herein. This Certificate shall not be reproduced except in full, without the written permission of CannaBusiness Laboratories. Photo is of sample received by the lab and may vary from final packaging. The results apply to the sample as received.



Certificate of Analysis

CANNABUSINESS LABORATORIES, LLC



Sample Name: 25mg/g CBD Cream
Sample ID: 230622016
Order Number: CB230622011
Product Type: Topical
Sample Type: Topical
Received Date: 06/22/2023
Batch Number: 2317316.25
COA released: 06/23/2023 4:57 PM

Potency (mg/g)

Date Tested: 06/23/2023

Method: CB-SOP-028

Instrument:

0.107 %	2.761 %	3.017 %	30.17 mg/g
Total THC	Total CBD	Total Cannabinoids	Total Cannabinoids

Analyte	Result	Units	LOQ	Result	Units
CBC (Cannabichromene)	0.016	%	0.010	0.161	mg/g
CBD (Cannabidiol)	2.761	%	0.010	27.61	mg/g
CBDa (Cannabidiolic Acid)	ND	%	0.010	ND	mg/g
CBDV (Cannabidivarin)	0.018	%	0.010	0.180	mg/g
CBG (Cannabigerol)	0.043	%	0.010	0.431	mg/g
CBGa (Cannabigerolic Acid)	ND	%	0.010	ND	mg/g
CBN (Cannabinol)	0.015	%	0.010	0.155	mg/g
D8-THC (D8-Tetrahydrocannabinol)	0.056	%	0.010	0.558	mg/g
D9-THC (D9-Tetrahydrocannabinol)	0.107	%	0.010	1.072	mg/g
THCa (Tetrahydrocannabinolic Acid)	ND	%	0.010	ND	mg/g



J.Hobgood
 Laboratory Manager

Jamie Hobgood

06/23/2023 4:57 PM

SIGNATURE

DATE

NT = Not tested, ND = Not detected; LOQ = Limit of Quantitation; <LOQ = Detected; >ULOL = Above upper limit of linearity; CFU/g = Colony forming units per 1 gram; TNTC = Too numerous to count

This product has been tested by CannaBusiness Laboratories using validated testing methodologies and a quality system. Values reported relate only to the product tested. CannaBusiness Laboratories makes no claims as to the efficacy, safety, or other risks associated with any detected or non-detected levels of any compounds reported herein. This Certificate shall not be reproduced except in full, without the written permission of CannaBusiness Laboratories. Photo is of sample received by the lab and may vary from final packaging. The results apply to the sample as received.