



Certificate of Analysis

CANNABUSINESS LABORATORIES, LLC



Sample ID **240124002**
 Order Number **CB240124001**
 Sample Name **80mg/mL CBD in OHSO**

External Sample ID
 Batch Number **2401811.80**

Product Type **Concentrate**
 Sample Type **Concentrate**

Received Date **1/24/2024**
 COA Released **1/25/2024**

Comments

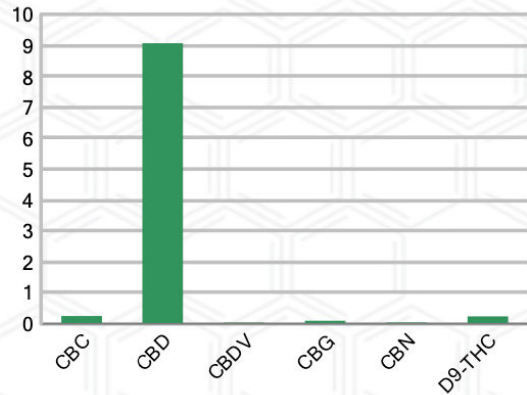
CANNABINOID PROFILE

Analyte	LOQ (%)	% Weight	mg/mL
CBC	0.01	0.253	2.354
CBD	0.01	9.069	84.34
CBDa	0.01	ND	ND
CBDV	0.01	0.039	0.359
CBG	0.01	0.098	0.911
CBGa	0.01	ND	ND
CBN	0.01	0.044	0.409
d8-THC	0.01	ND	ND
d9-THC	0.01	0.243	2.263
THCa	0.01	ND	ND
Total Cannabinoids		9.746	90.64
Total Potential THC		0.243	2.263
Total Potential CBD		9.069	84.34
Total Potential CBG		0.098	0.911
Ratio of Total Potential CBD to Total Potential THC			37.32 : 1
Ratio of Total Potential CBG to Total Potential THC			0.40 : 1

SAMPLE IMAGE



CANNABINOIDS % Weight



*Total Cannabinoids refers to the sum of all cannabinoids detected.

*Total Potential CBD = (0.877 x CBDa) + CBD. *Total Potential THC = (0.877 x THCa) + THC. *Total Potential CBG = (0.877 x CBGa) + CBG.

*Total Potential THC/CBD are calculated to take into account the loss of an acid group during decarboxylation.



J. Hobgood
 Laboratory Manager
 SIGNATURE

Jamie Hobgood
 LABORATORY MANAGER

01/25/2024 3:09 PM
 DATE

This product has been tested by CannaBusiness Laboratories using validated testing methodologies and a quality system. Values reported relate only to the product tested. CannaBusiness Laboratories makes no claims as to the efficacy, safety, or other risks associated with any detected or non-detected levels of any compounds reported herein. This Certificate shall not be reproduced except in full, without the written permission of CannaBusiness Laboratories. Photo is of sample received by the lab and may vary from final packaging. The results apply to the sample as received.

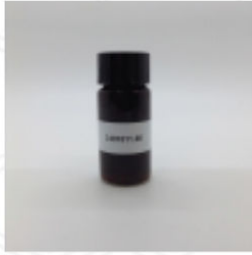


Certificate of Analysis



Certificate of Analysis

CANNABUSINESS LABORATORIES, LLC



Sample Name: 80mg/mL CBD in OHSO

Sample ID: 240124002

Order Number: CB240124001

Product Type: Concentrate

Sample Type: Concentrate

Received Date: 01/24/2024

Batch Number: 2401811.80

COA released: 01/25/2024 3:09 PM

Potency (mg/mL)	
Date Tested: 01/25/2024	Method: CB-SOP-028
Instrument:	

0.243 %	9.069 %	9.746 %	90.64 mg/mL
Total THC	Total CBD	Total Cannabinoids	Total Cannabinoids

Analyte	Result	Units	LOQ	Result	Units
CBC (Cannabichromene)	0.253	%	0.010	2.354	mg/mL
CBD (Cannabidiol)	9.069	%	0.010	84.34	mg/mL
CBDa (Cannabidiolic Acid)	ND	%	0.010	ND	mg/mL
CBDV (Cannabidivarin)	0.039	%	0.010	0.359	mg/mL
CBG (Cannabigerol)	0.098	%	0.010	0.911	mg/mL
CBGa (Cannabigerolic Acid)	ND	%	0.010	ND	mg/mL
CBN (Cannabinol)	0.044	%	0.010	0.409	mg/mL
D8-THC (D8-Tetrahydrocannabinol)	ND	%	0.010	ND	mg/mL
D9-THC (D9-Tetrahydrocannabinol)	0.243	%	0.010	2.263	mg/mL
THCa (Tetrahydrocannabinolic Acid)	ND	%	0.010	ND	mg/mL



J.Hobgood
Laboratory Manager

Jamie Hobgood

01/25/2024 3:09 PM

SIGNATURE

DATE

NT = Not tested, ND = Not detected; LOQ = Limit of Quantitation; <LOQ = Detected; >ULOL = Above upper limit of linearity; CFU/g = Colony forming units per 1 gram; TNTC = Too numerous to count

This product has been tested by CannaBusiness Laboratories using validated testing methodologies and a quality system. Values reported relate only to the product tested. CannaBusiness Laboratories makes no claims as to the efficacy, safety, or other risks associated with any detected or non-detected levels of any compounds reported herein. This Certificate shall not be reproduced except in full, without the written permission of CannaBusiness Laboratories. Photo is of sample received by the lab and may vary from final packaging. The results apply to the sample as received.